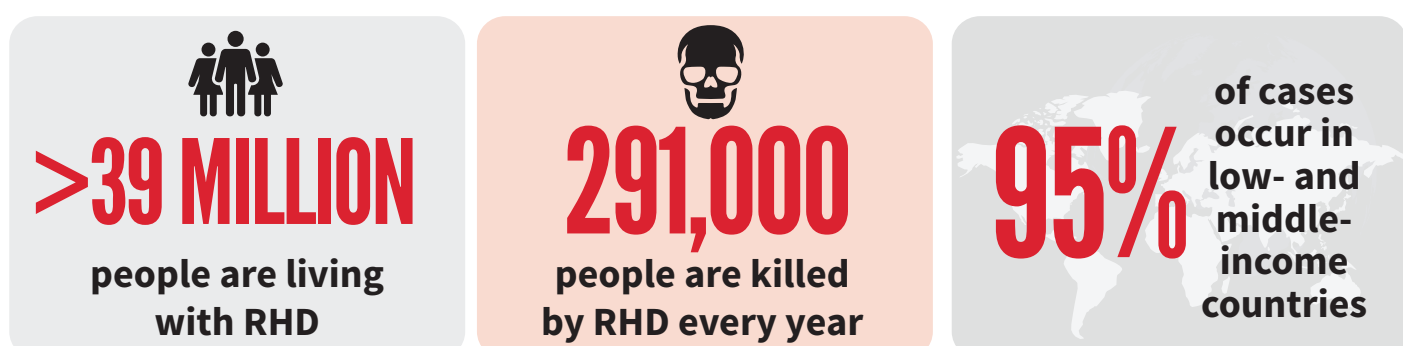


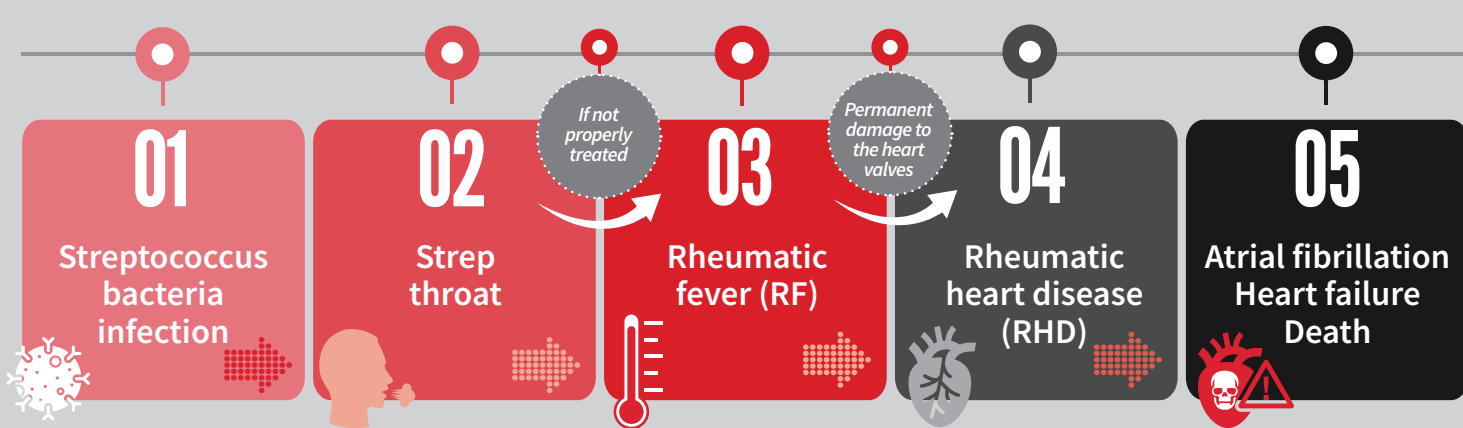
RHEUMATIC HEART DISEASE (RHD)



💔 **Rheumatic heart disease** 💔
is a life-threatening heart condition which results from damage to heart valves caused by one or several episodes of rheumatic fever.

💔 **Rheumatic fever** 💔
is caused by an abnormal response of the body to infection with streptococcal bacteria, which usually begins as a sore throat or tonsillitis in children.

FROM SORE THROAT TO HEART FAILURE



WHO'S AT RISK?

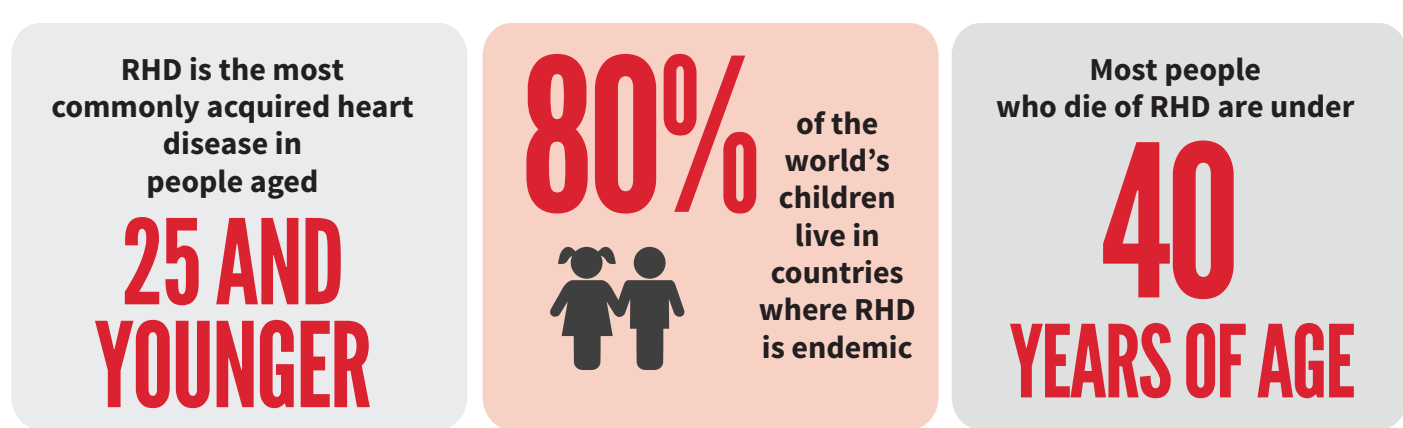
Children aged 5 to 15 years old (but RF and RHD can occur at any age)

Children who suffer **repeated strep throat infections**

People in **low-income countries**

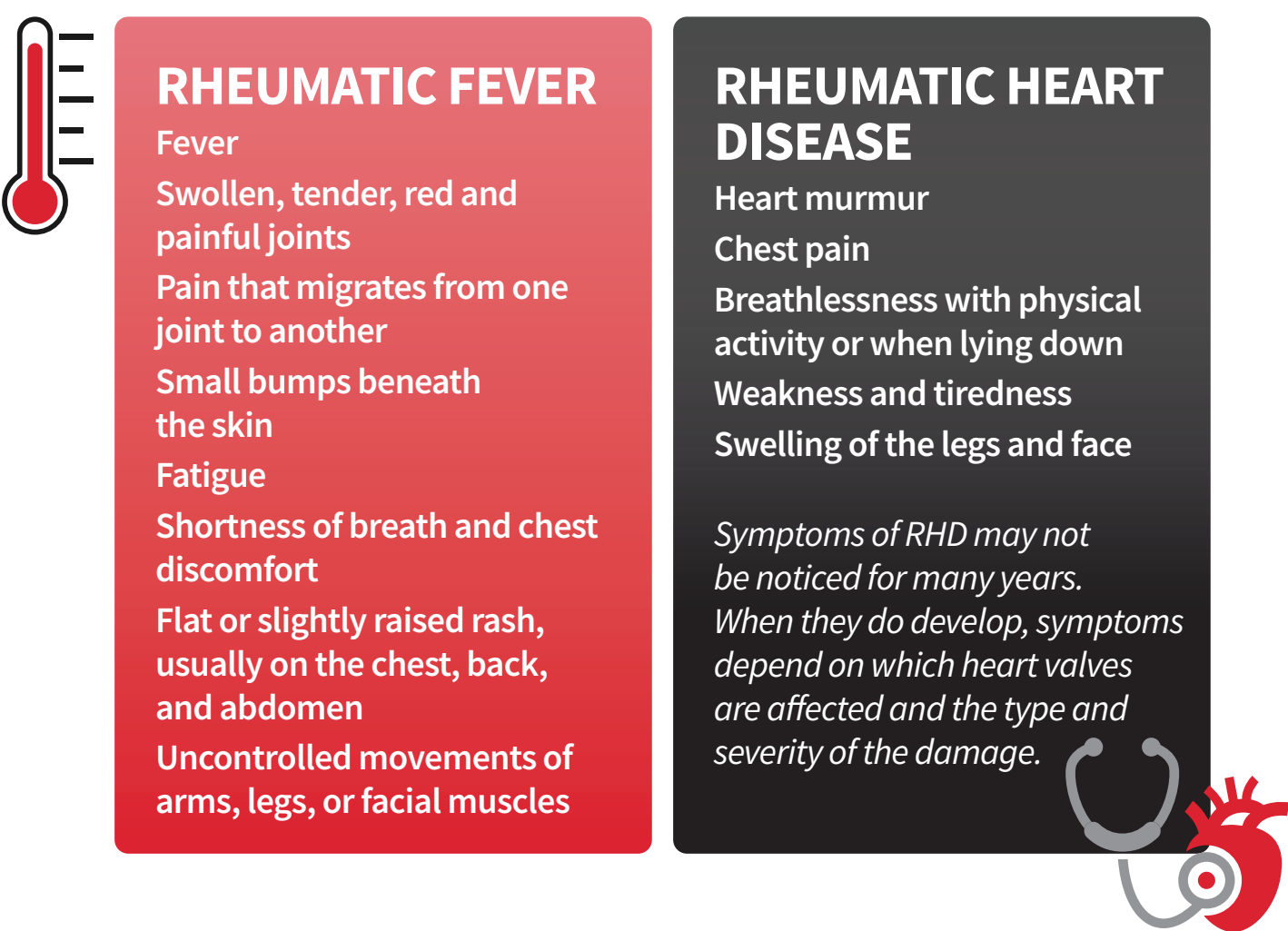
People living in certain **indigenous communities**

People who have immigrated from **countries where rheumatic fever is more common**



A greater risk of rheumatic fever is associated with overcrowding, poor sanitation and other conditions that can easily result in the rapid transmission or multiple exposures to strep bacteria.

SYMPTOMS



RHEUMATIC FEVER

- Fever
- Swollen, tender, red and painful joints
- Pain that migrates from one joint to another
- Small bumps beneath the skin
- Fatigue
- Shortness of breath and chest discomfort
- Flat or slightly raised rash, usually on the chest, back, and abdomen
- Uncontrolled movements of arms, legs, or facial muscles

RHEUMATIC HEART DISEASE

- Heart murmur
- Chest pain
- Breathlessness with physical activity or when lying down
- Weakness and tiredness
- Swelling of the legs and face

Symptoms of RHD may not be noticed for many years. When they do develop, symptoms depend on which heart valves are affected and the type and severity of the damage.

PREVENTION

- Prevent strep throat infections
- Treat infections with antibiotics (such as penicillin) to prevent rheumatic fever
- Prevent additional streptococcal infection
- Long-term antibiotics can reduce progression to more severe disease

TREATMENT

