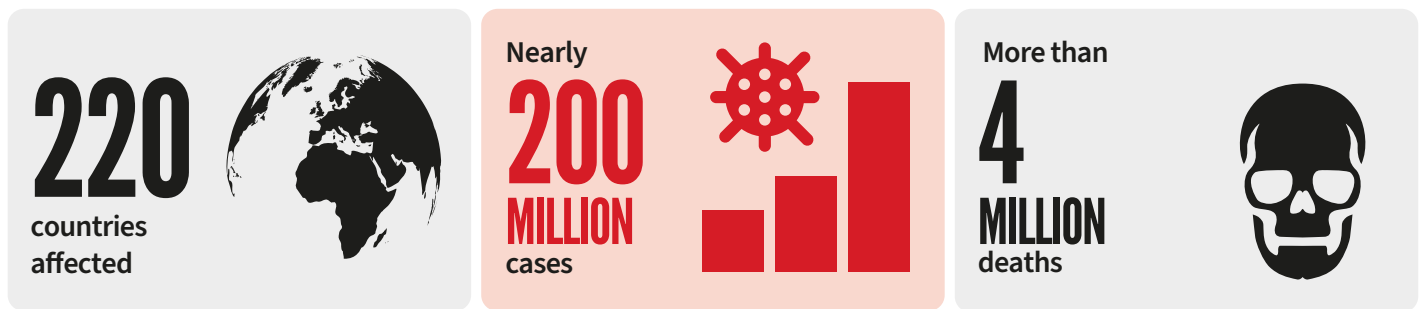


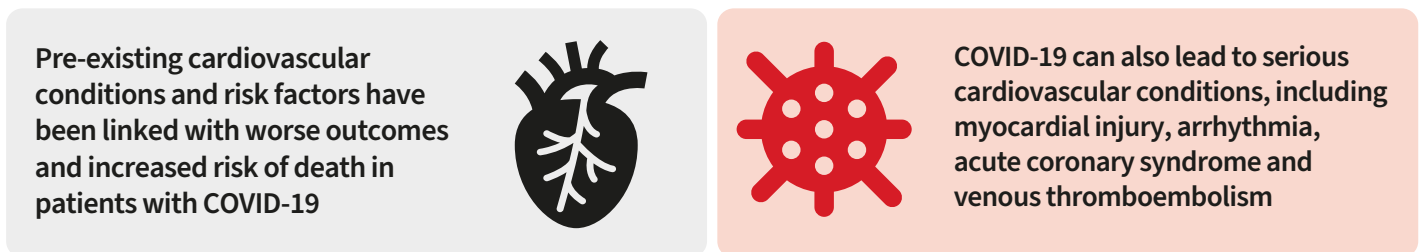
GLOBAL STUDY ON COVID-19 & CVD

PRELIMINARY RESULTS (PRELIMINARY ANALYSIS OF FIRST 2500 PATIENTS)

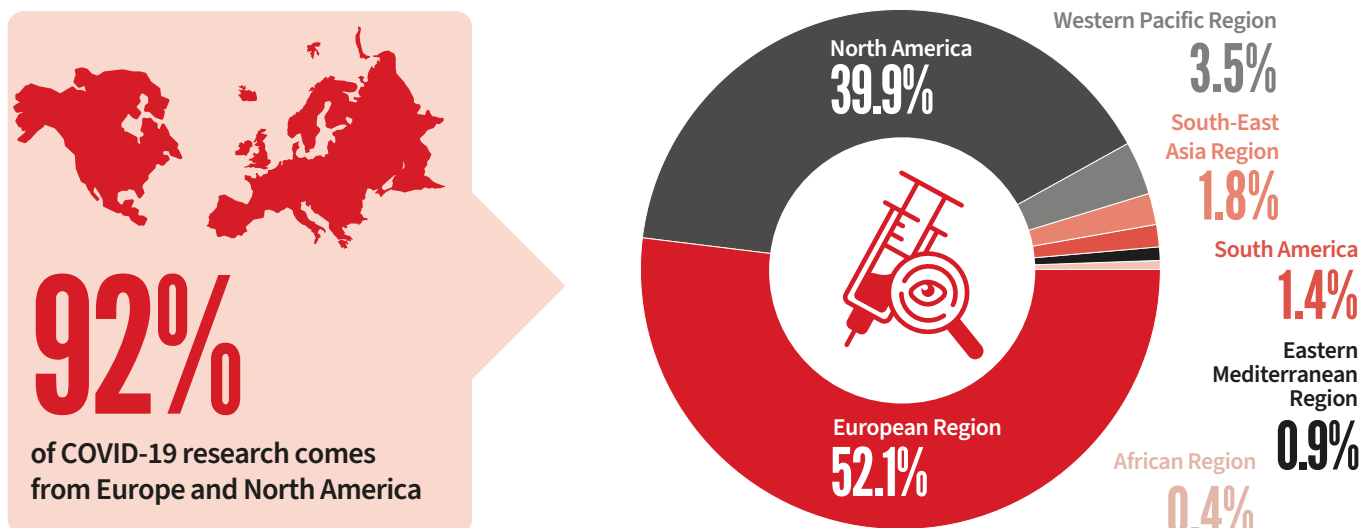
COVID-19 IN NUMBERS



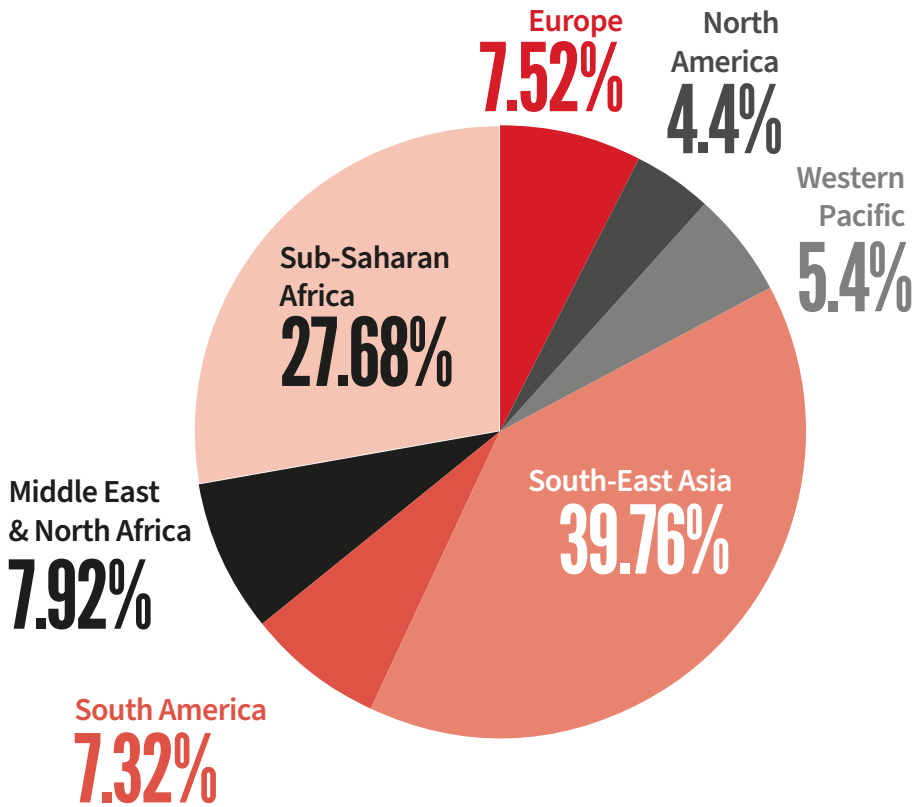
COVID-19 & CVD



WHF COVID-19 & CVD STUDY IS CLOSING THE RESEARCH GAP



WHF COVID-19 & CVD STUDY



92%



of recruited patients are from Africa (28%), Asia (53%) and Latin America (11%)

86%



are from low- and middle-income countries

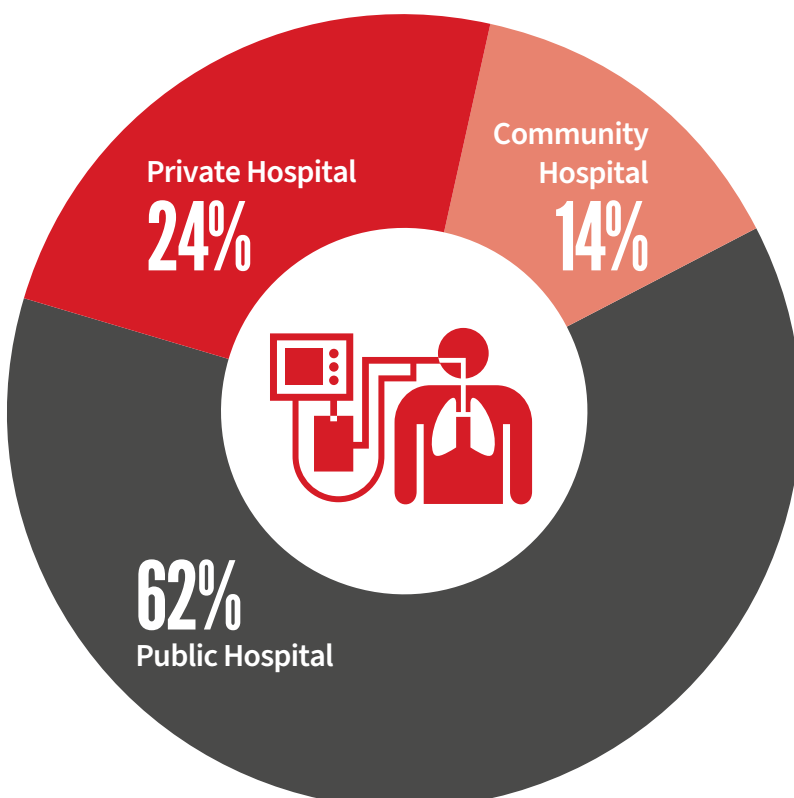
66%



are from lower middle-income countries

PARTICIPATING HOSPITALS

All participating hospitals had an ICU and ventilators



50%



of participating hospitals in Europe had specialists*

56%



of hospitals in South-East Asia had specialists* and 89% had advanced care**

50%

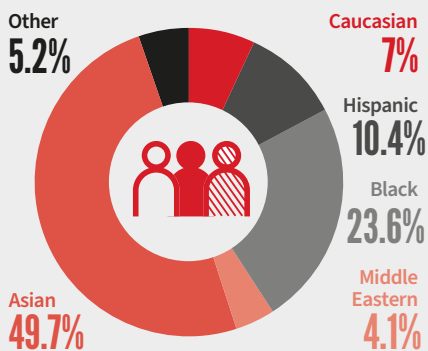


of hospitals in Sub-Saharan Africa had specialists* or advanced care**

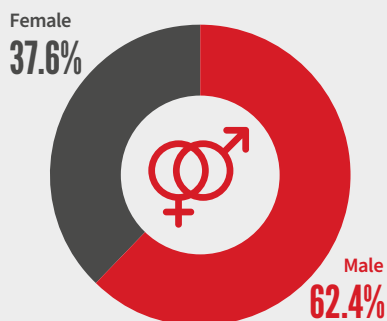
* Respiratory/infectious disease experts or cardiologists
 ** ECMO, ECHO, Cath lab

PATIENTS

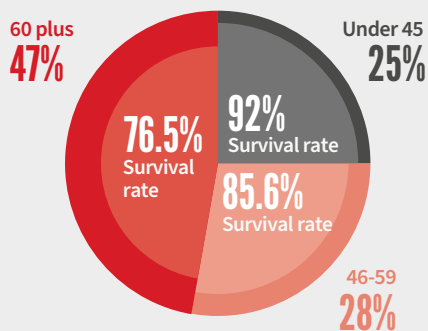
Ethnic origin



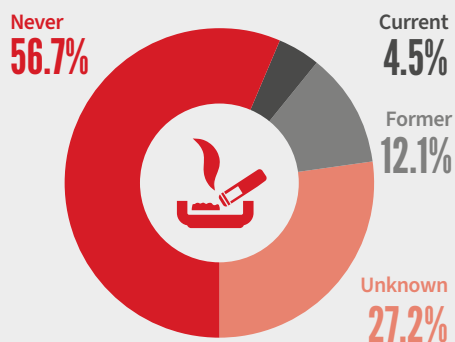
Gender



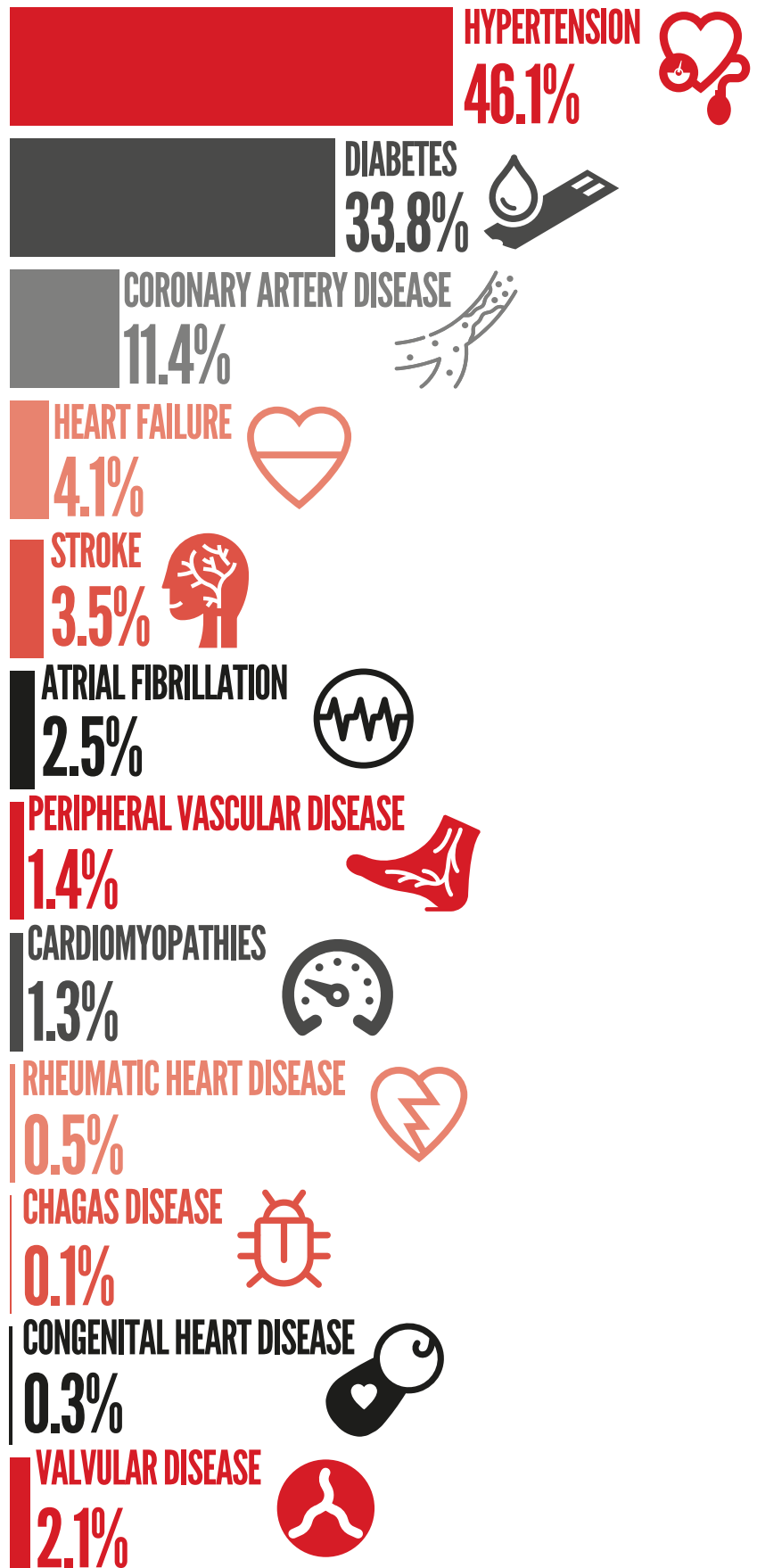
Age



Tobacco use

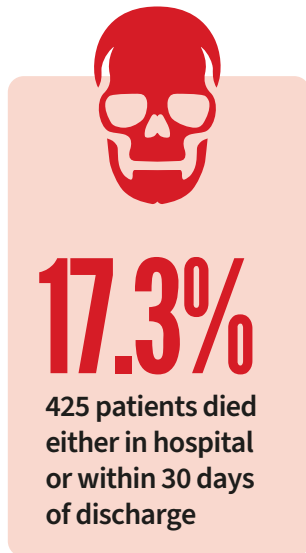
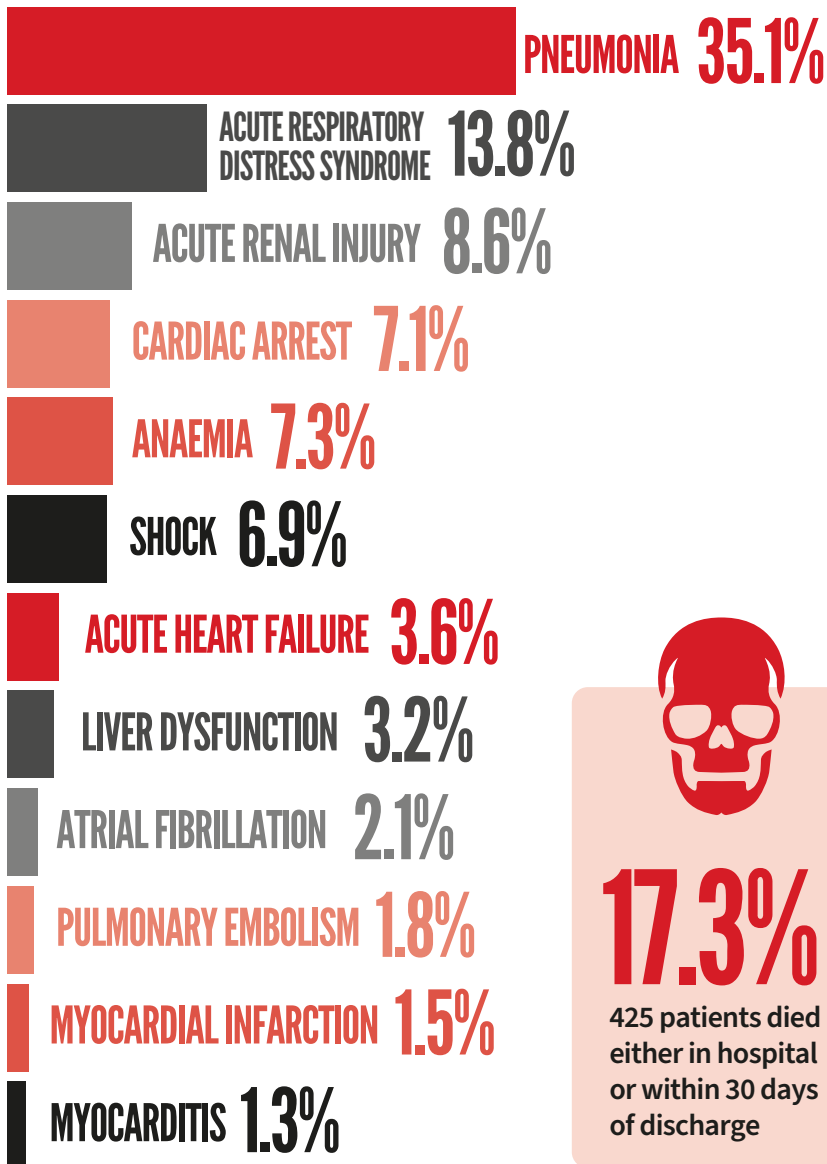


Pre-existing conditions

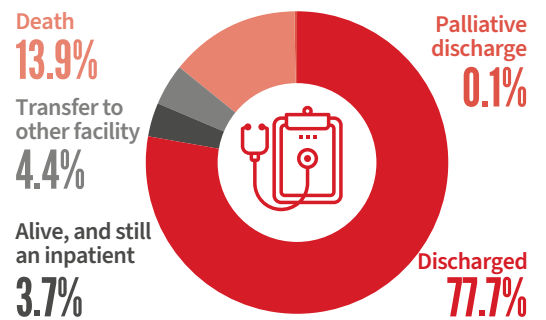


OUTCOMES

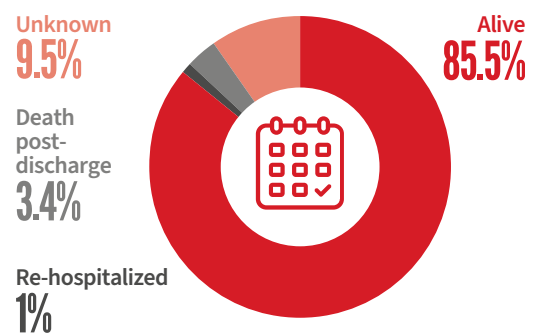
Clinical outcomes reported at discharge



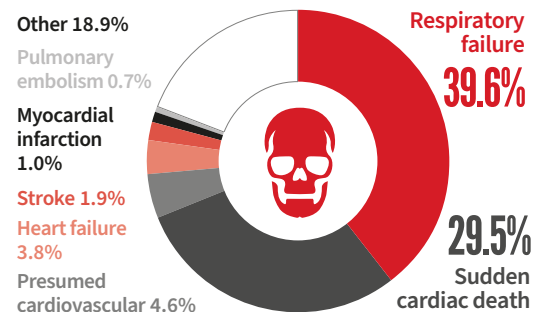
Outcomes at discharge



30 Day outcome



Cause of death



KEY FINDINGS

PRE-EXISTING CHRONIC CONDITIONS = HIGHER MORTALITY



COVID-19 patients recruited mostly from LMICs were younger*



Higher rates of hypertension and diabetes, but lower in-hospital deaths*



Increased post-discharge mortality (i.e., 17% up to 30 days)*

*compared to other cohorts from United States and Europe